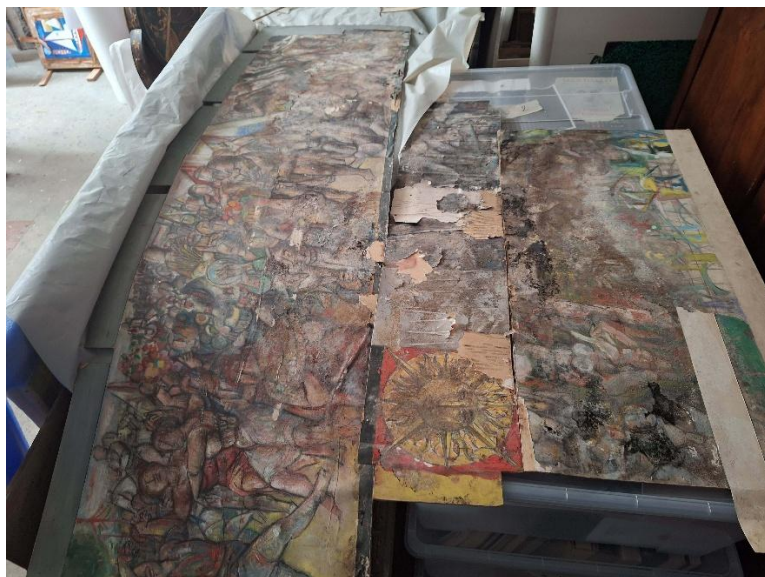
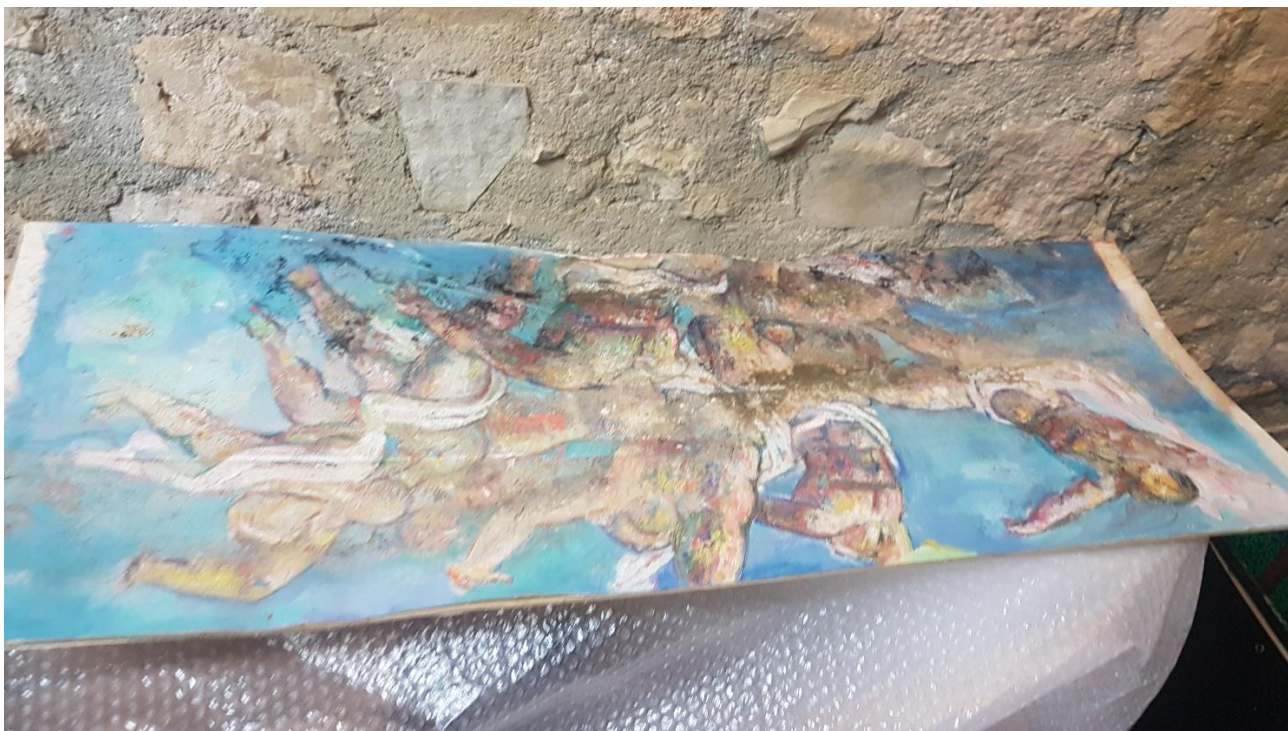


**Exemples des dommages et destructions d'œuvres MENTOR, objets d'art et mobilier à la Casa Nieves, Solliès-Toucas  
Constat après travaux toitures 2023 (maître d'ouvrage J. FABRE, maire depuis 2020)**

**Maquette et études "La Conquête du Bonheur", Maison du peuple, La Courneuve (peintures murales 400 m<sup>2</sup> inaugurée en 1967)**  
<https://blasco-mentor.fr/france/peintures-murales/la-courneuve/02genese/la-courneuve-genese.htm>





**Maquette et études "Mercure et l'Abondance", Palais Castiglione, Milan, (Peinture murale 250 m<sup>2</sup> inaugurée en 1973)**  
<https://blasco-mentor.fr/france/peintures-murales/milan/01presentation/milan-presentation.htm>



**MENTOR, *La Campagne à Aubervilliers*, 1945, huile sur toiles, 60 x 73 cm**



Exposée à *Trésors de banlieues*, Gennevilliers, 2019



Après travaux 2023 (atelier peinture, Casa Nieves)

**MENTOR, *Deux moutons*, 1956, huile sur toile, 24 x 33 cm (atelier peinture, Casa Nieves)**



Etat initial



Etat après travaux 2023

**MENTOR, *Médaille sur pied* (véranda atelier peinture, Casa Nieves)**



Etat initial



Etat après travaux 2023

Objets mobiliers, Casa Nieves (exemple de dommage 2023)

Guéridon XIXème siècle, 4 tiroirs, Plateau décoré de laque sino-japonaise, à décor de médaillon et éventail (antichambre)



(Ph. I. ROLLIN-ROLLIN inventaires officiels)



**"Stockage" par la mairie (janvier 2023) d'œuvres de Mentor, objets d'art et mobiliers de la Casa Nieves, avant les travaux de toitures 2023 (*Univers MENTOR* a été écarté de cette préparation)**

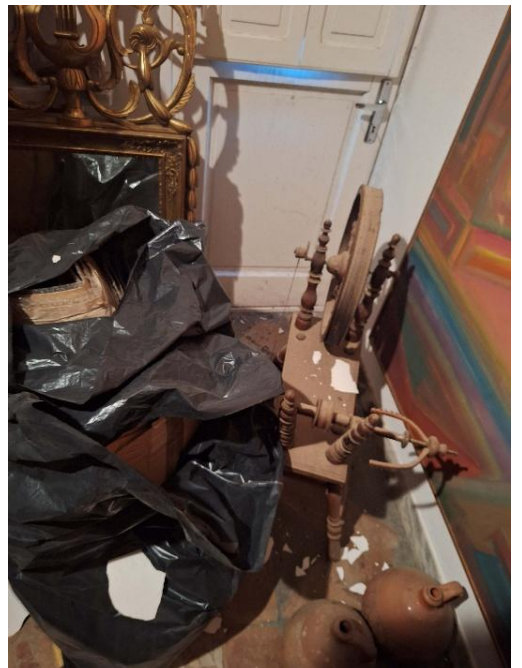
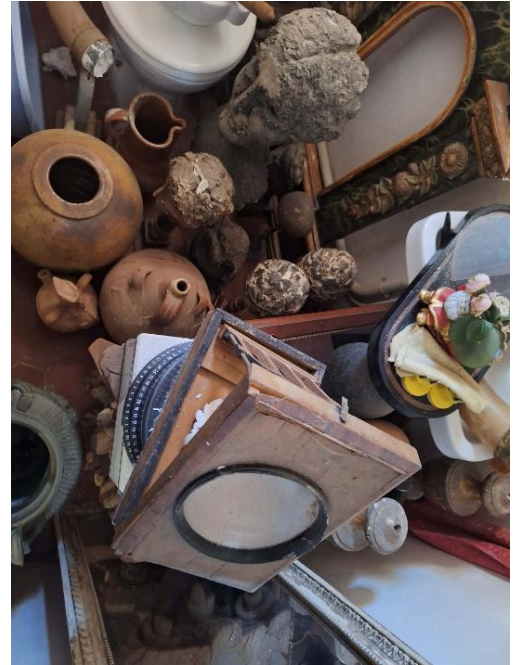


Antichambre Casa Nieves



Atelier peinture

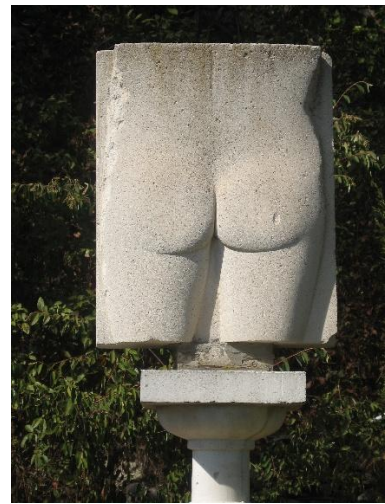
"Stockage" mairie, 2023, petit salon de l'antichambre, Casa Nieves



Sculptures de MENTOR, jardins Casa Nieves (constat 2024)



MENTOR, *Le Couple*, ciment (porte d'entrée Casa Nieves) avant / après travaux 2023



MENTOR, 3 sculptures sur piédestal, siporex



#### MENTOR – SCULPTURES

Mentor (1919-2003), a painter whose renown was somehow forgotten and to whom the Museum of Fine Arts of Barcelona, his hometown, had purchased a painting when this young master was only fourteen, was awarded – after Picasso – the Medal of the Fine Arts school. Enlisted in the Republican Army, he had to go into exile in France in 1939, dividing his time and his occupation as a painter between the Casa Nieves he built in Solliès-Toucas and his studio in Paris. He was awarded prestigious prizes, including the Critique and the Salon des Peintres témoins de leur temps ones. Mentor created monumental murals (La Courneuve, Milan), and was chosen for the opening of Galerie Artcurial in Paris in 1975 with "La Taumachie", the famous series of twenty-five large-scale paintings.

Still, the success of his career as a painter did not affect his creative curiosity which was then completed with an activity he had not practised before: sculpture. The renown of the painter could have spared him from this "risk taking".

He made a fresh start and invented his sculptural practice.

Unlike painting, sculpture does not allow repenting, especially when it is about direct carving and not modelling nor assembling. This practice commits the artist differently, it is a hand-to-hand struggle with a block of raw material potentially "containing" the artwork.

It is rare to see Mentor presented only through his sculptures, and the Toulon festival celebrates the artist with about twenty of them.

The set, attesting to his ability to consider this practice in all its diversity, shows how resourceful this artist was. Facing the difficulties of sculpting a volume, he started by modelling clay for works which were to become bronze casts. He finally ventured direct carving in which any mistake is irreversible.

Among these sculptures, we mainly know the famous sphinges, sometimes dreamy, the beautiful languid whose names, often borrowed from ancient mythology, invite us to onerous journeys. Characters, animals, or chimeric masks tell fantastic out-of-time stories. Among Mentor's sculptures, whether modelled or assembled, those carved in more or less resistant materials, from Siporex to marble, are less known. These creations express the woman or the man with a certain permanence: fragments of bodies, heads, torsos, bellies, bottoms, breasts, the essential is there, indispensable, eloquent, metonymies of the human body. Mentor then turns away from the anecdote and narrative to strive for an Absolute.

Isabelle Rollin-Royer  
Director of Univers MENTOR



TÊTE-LUNE, SD, SIPOREX, COURTESY VILLE DE SOLLIÈS-TOUCAS  
© IRR - UNIVERS MENTOR  
FESSES DE FEMME, SD, SIPOREX, COURTESY VILLE DE SOLLIÈS-TOUCAS  
© IRR - UNIVERS MENTOR  
VENTRE DE FEMME, SD, SIPOREX, COURTESY VILLE DE SOLLIÈS-TOUCAS  
© IRR - UNIVERS MENTOR  
TORSO DE FEMME ET TORSO D'HOMME, SD, SIPOREX, COURTESY VILLE DE SOLLIÈS-TOUCAS  
© IRR - UNIVERS MENTOR

Extrait, catalogue exposition Ancien Evêché, Toulon (25 juin/31 octobre 2021)



Après travaux 2023



MENTOR, Grand oiseau bleu, assemblage, 155 x 52 cm - Rétrospective *MENTOR ou le miroir du temps*, Musée Goya, Castres (2009-2010)



MENTOR, *Grand oiseau bleu*, assemblage, 155 x 52 cm, jardins Casa Nieves, avant/après travaux 2023

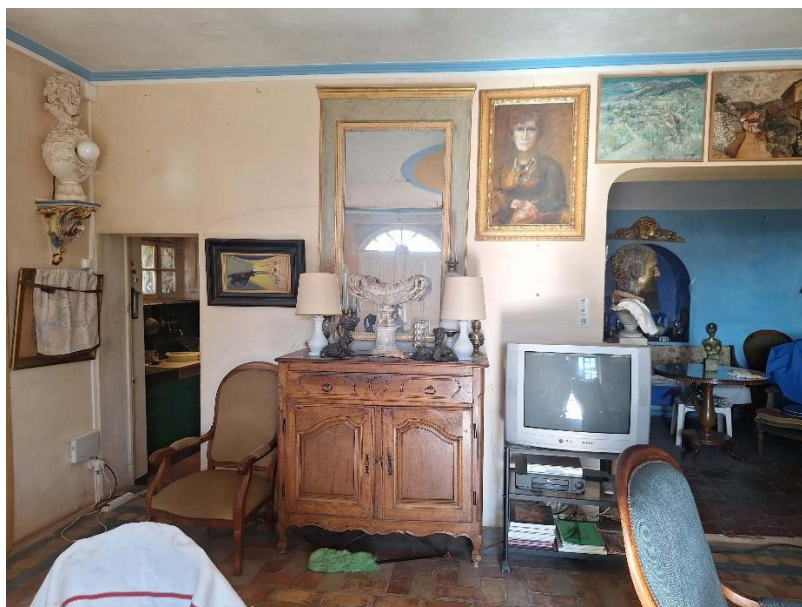
Dessins disparus, grand salon Casa Nieves (constat 2024)



Les deux dessins dans la scénographie du grand salon de la Casa Nieves



MENTOR, *Autoportrait*, 1945, mine de plomb sur papier, 38 x 24 cm (Ph. IRR inventaires officiels)  
*Portrait de Neige*, 21 mars 1955, mine de plomb, 65 x 50 cm (Ph. IRR inventaires officiels)



Le grand salon en 2024, après les interventions de la mairie en 2023